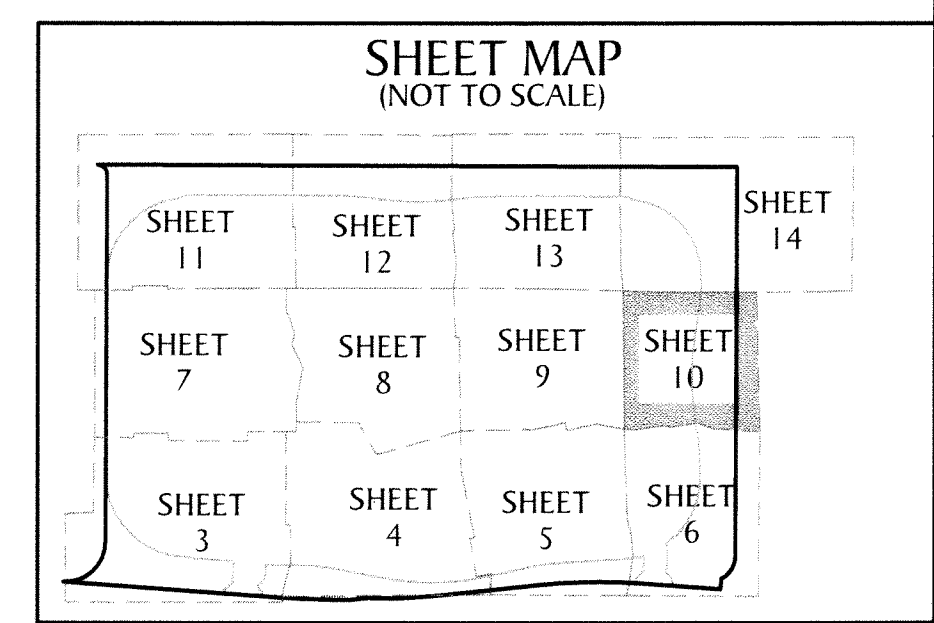
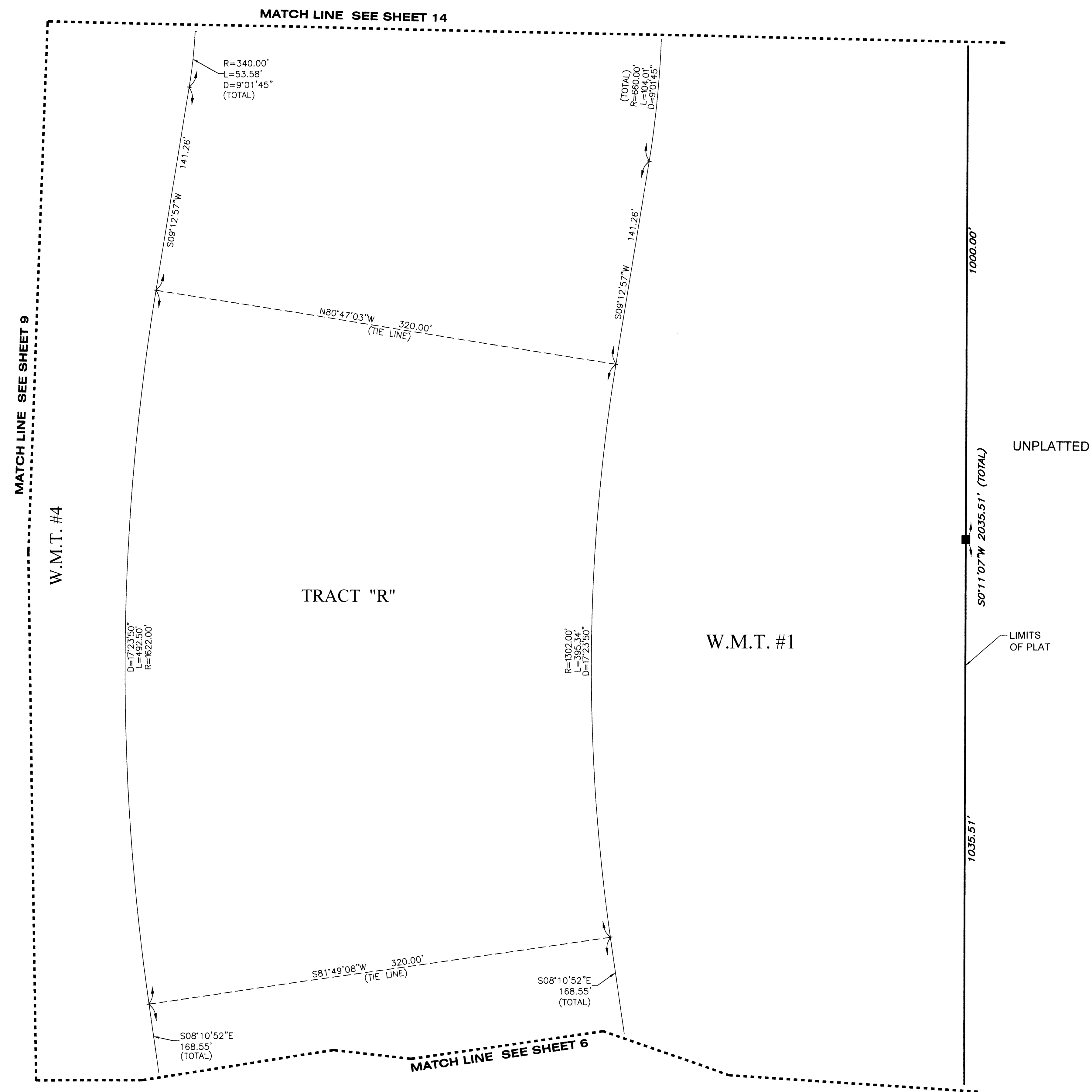
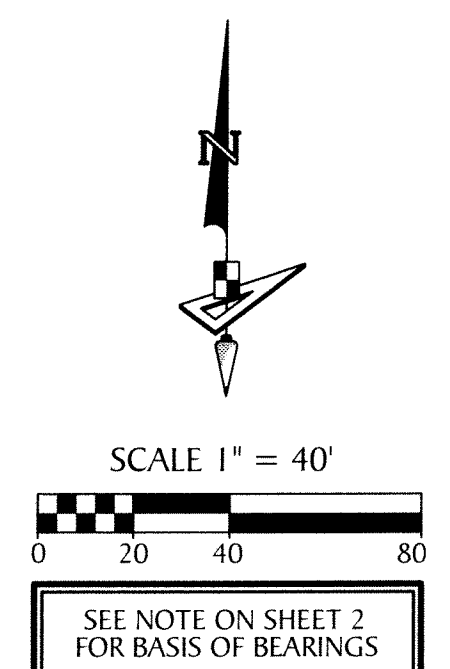


# MEADOWS OF WESTLAKE - PHASE I

BEING A PLAT OF A PORTION OF  
SECTION 6, TOWNSHIP 43 SOUTH, RANGE 41 EAST,  
CITY OF WESTLAKE, PALM BEACH COUNTY, FLORIDA

149



- LEGEND**
- P.B. ----- PLAT BOOK
  - D.B. ----- DEED BOOK
  - PG./PG(s) ----- PAGE(S)
  - W.M.T. ----- WATER MANAGEMENT TRACT
  - O.S.T. ----- OPEN SPACE TRACT
  - R.P.E. ----- RURAL PARKWAY EASEMENT
  - P.B.C. ----- PALM BEACH COUNTY
  - U.E. ----- UTILITY EASEMENT
  - D.E. ----- DRAINAGE EASEMENT
  - L.M.E. ----- LAKE MAINTENANCE EASEMENT
  - L.M.A.E. ----- LAKE MAINTENANCE ACCESS EASEMENT
  - R ----- RADIUS
  - L ----- ARCH LENGTH
  - D ----- DELTA ANGLE
  - CB ----- CHORD BEARING
  - C ----- CHORD
  - 6-43-41 ----- SECTION-TOWNSHIP-RANGE
  - ----- FOUND PERMANENT REFERENCE MONUMENT
  - ----- SET PERMANENT REFERENCE MONUMENT
  - ----- PERMANENT CONTROL POINT
  - P.C. ----- POINT OF CURVATURE
  - P.T. ----- POINT OF TANGENCY
  - R/W ----- RIGHT-OF-WAY

**GeoPoint**  
Surveying, Inc.

4152 W. Blue Heron Blvd. Phone: (561) 444-2720  
Suite 105 www.geopointsurvey.com  
Riviera Beach, FL 33404 Licensed Business Number LB 7768

Sheet No. 10 of 14 Sheets